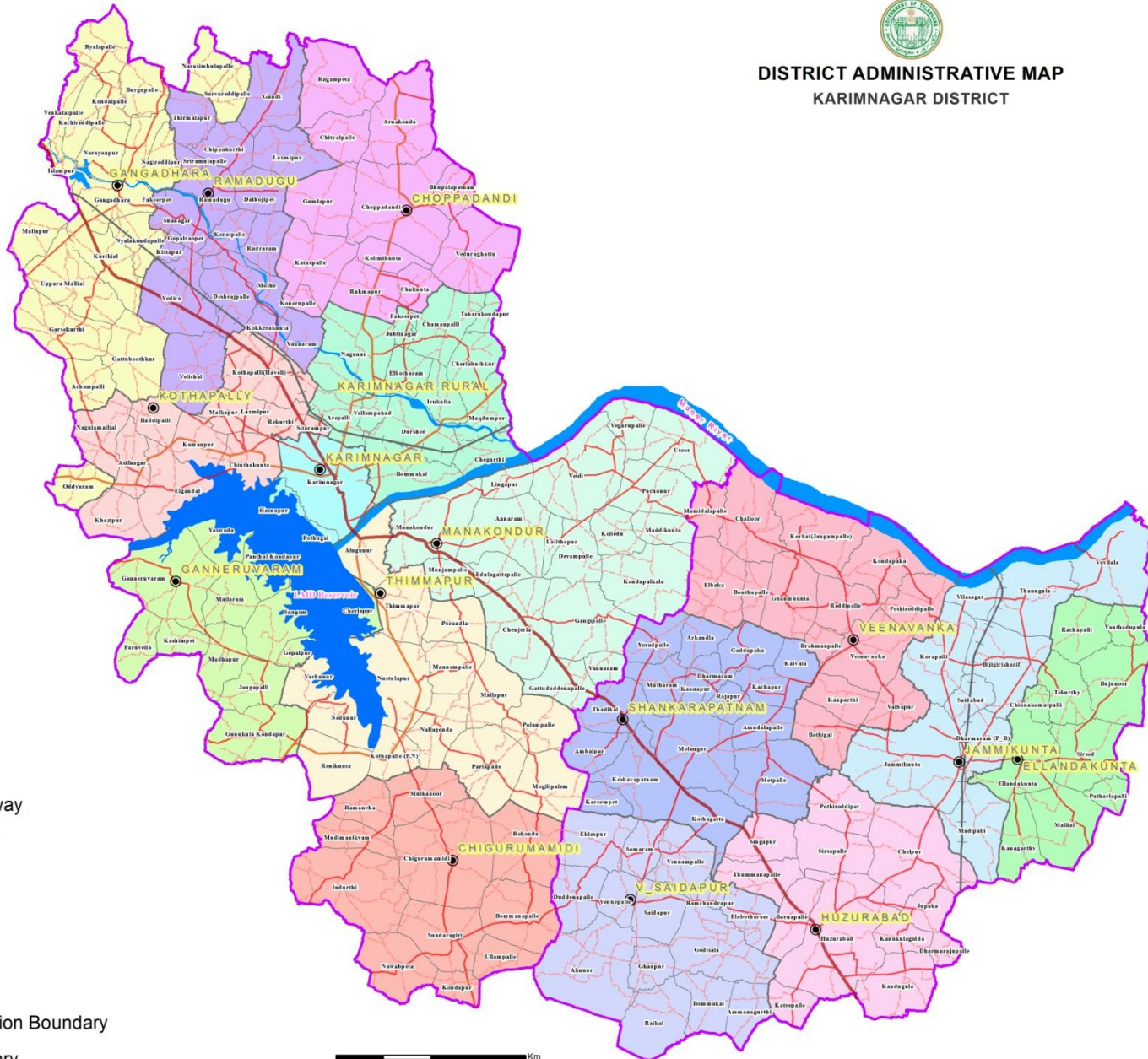


TRAC Regional Centre & DKIC, Karimnagar
Planning Department, Government of Telangana

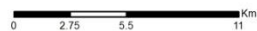


DISTRICT ADMINISTRATIVE MAP KARIMNAGAR DISTRICT



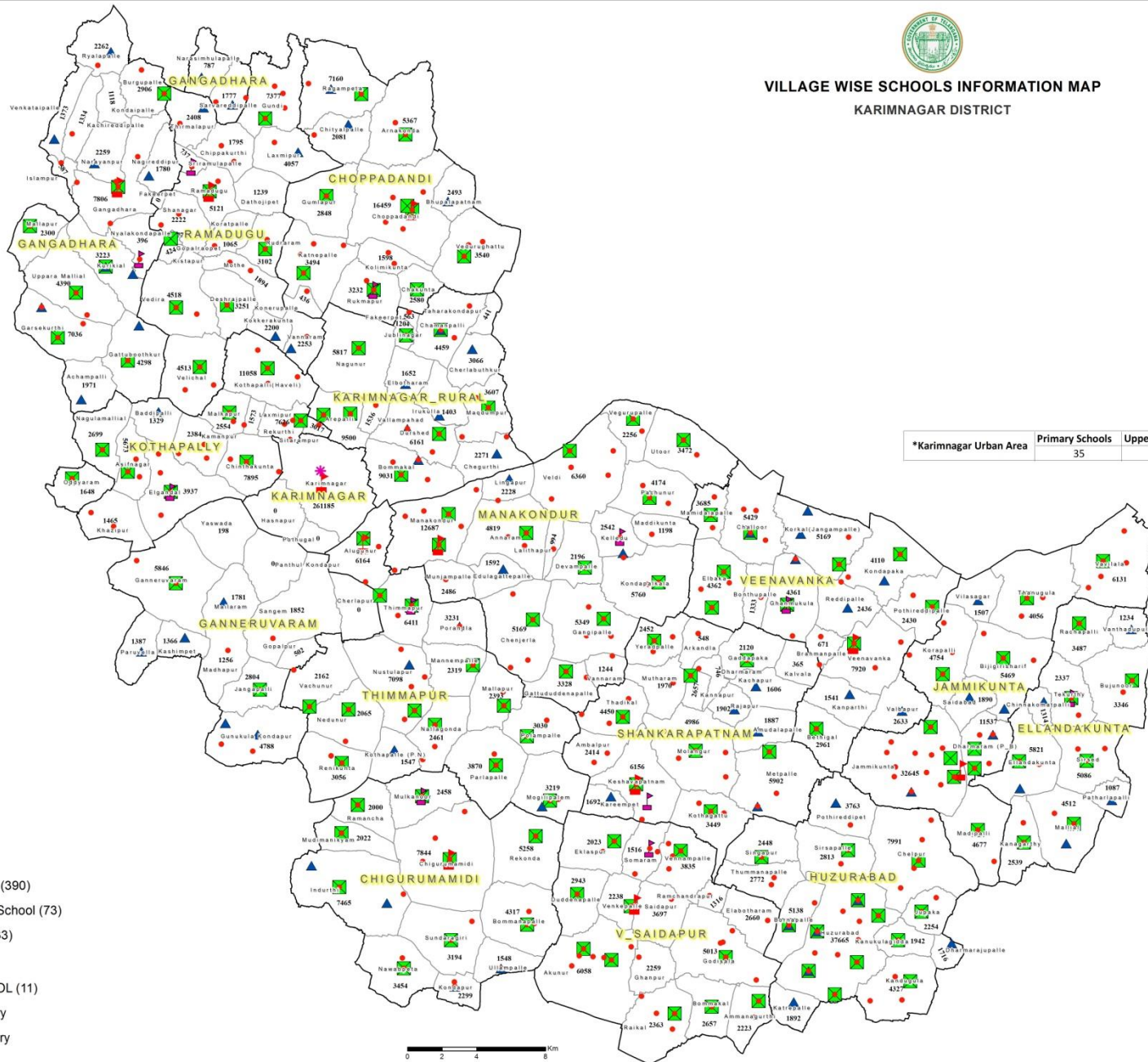
Legend

- Mandal HQ
- Railroad
- National Highway
- State Highway
- District Road
- Village Road
- Reservoir
- River
- Revenue Division Boundary
- Village Boundary





VILLAGE WISE SCHOOLS INFORMATION MAP KARIMNAGAR DISTRICT



*Karimnagar Urban Area	Primary Schools	Upper Primary Schools	High Schools
	35	2	16

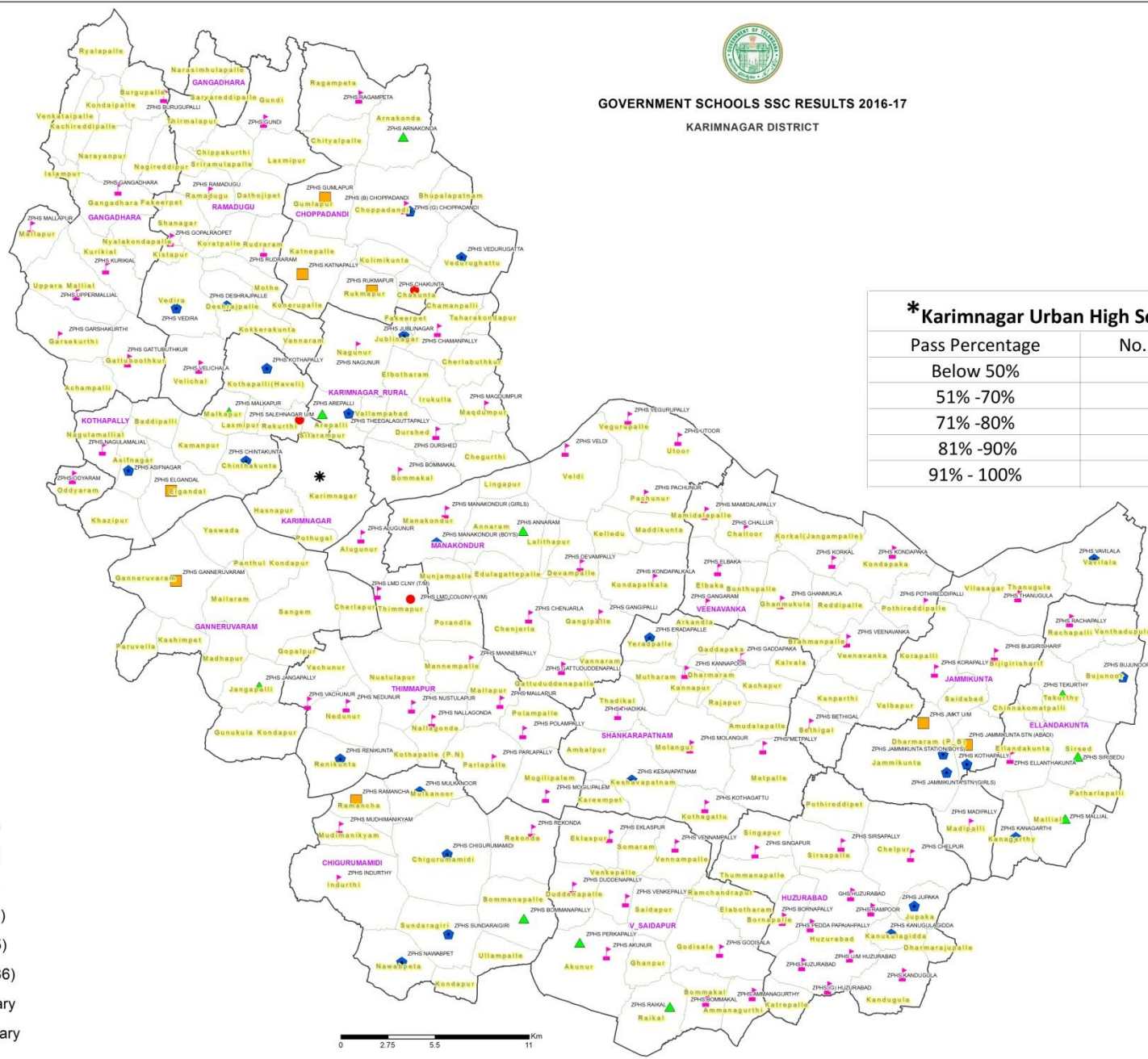
Legend

- Primary School (390)
- ▲ Upper Primary School (73)
- High School (133)
- ▲ KGBV (11)
- MODEL SCHOOL (11)
- Village Boundary
- Mandal Boundary

0 2 4 8 Km



GOVERNMENT SCHOOLS SSC RESULTS 2016-17
KARIMNAGAR DISTRICT



*** Karimnagar Urban High School (16)**

Pass Percentage	No. of Schools
Below 50%	0
51% - 70%	6
71% - 80%	6
81% - 90%	4
91% - 100%	0

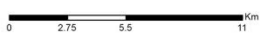
Legend

Pass Percentage

- Below 50% (3)
- 51% - 70% (8)
- ▲ 71% - 80% (11)
- ◆ 81% - 90% (25)
- ♣ 91% - 100% (86)

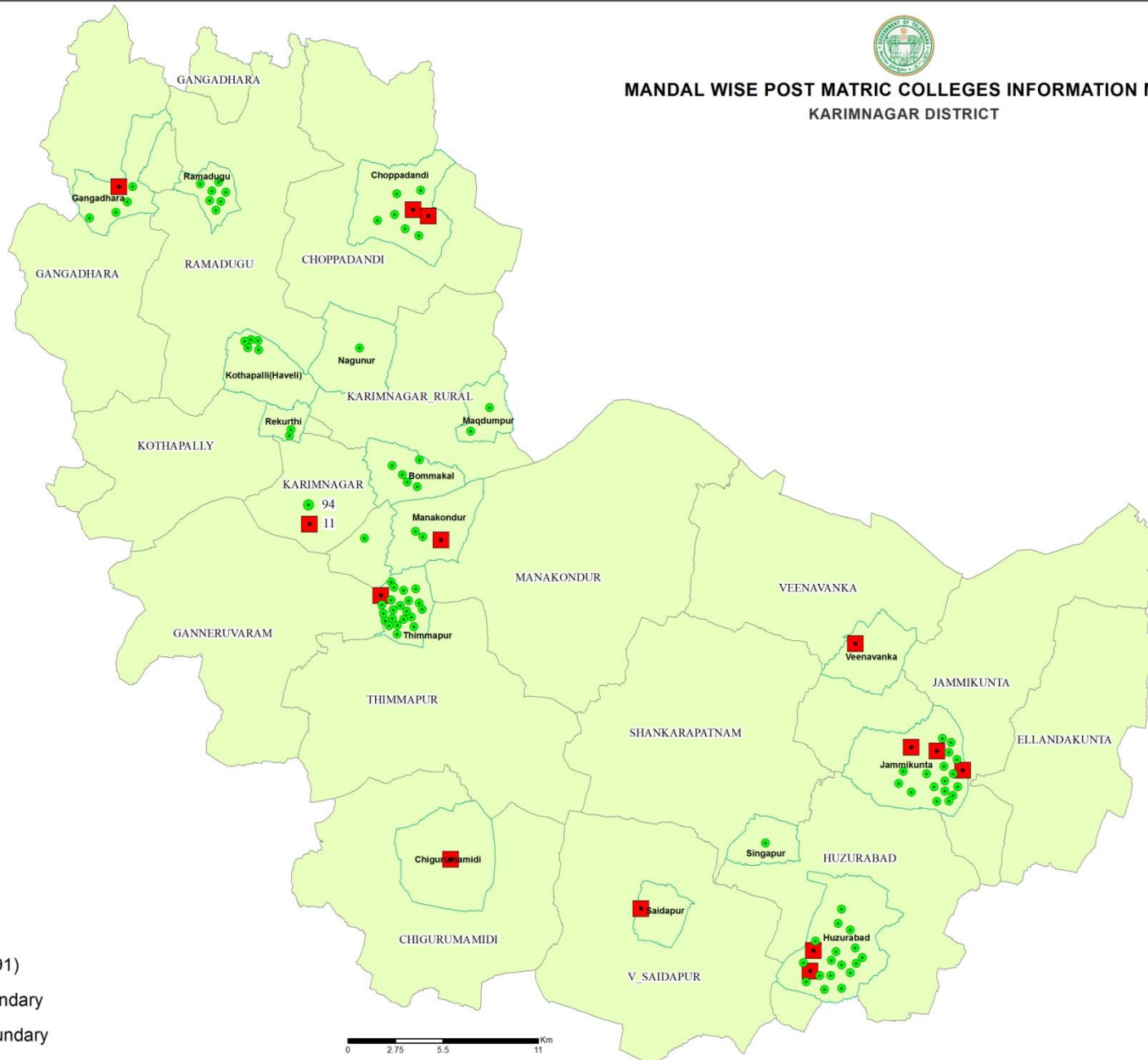
□ Village Boundary

□ Mandal Boundary



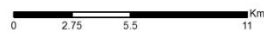


MANDAL WISE POST MATRIC COLLEGES INFORMATION MAP KARIMNAGAR DISTRICT

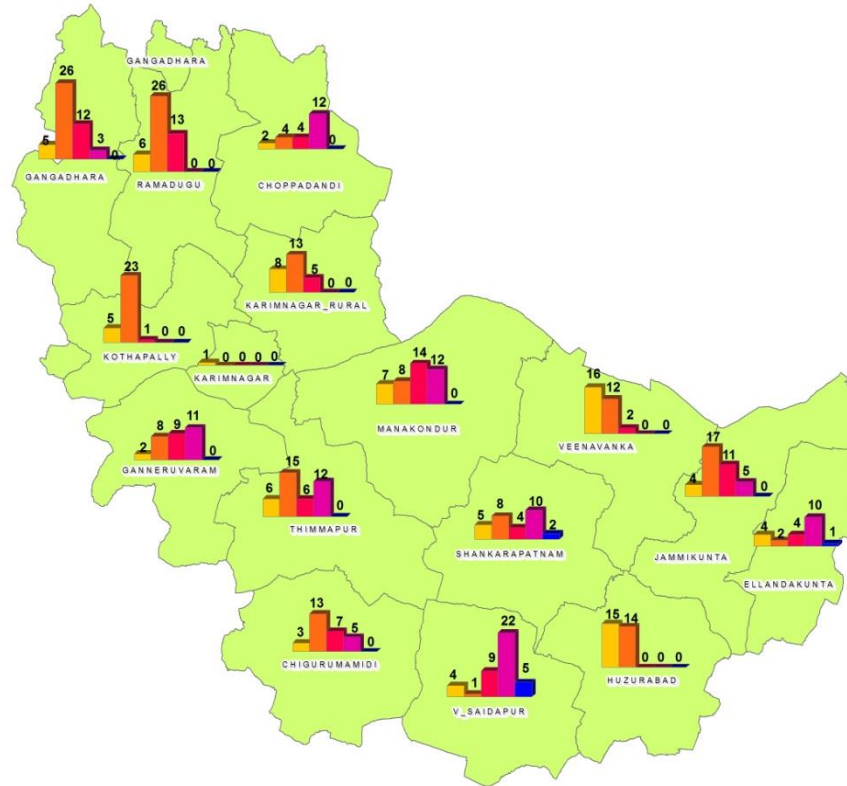


Legend

- GOVT (13)
- PRIVATE (91)
- Village Boundary
- Mandal Boundary



**MANDAL WISE NUMBER OF HABITATIONS HAVING BANK / POST OFFICE FACILITIES
(KARIMNAGAR DISTRICT)**



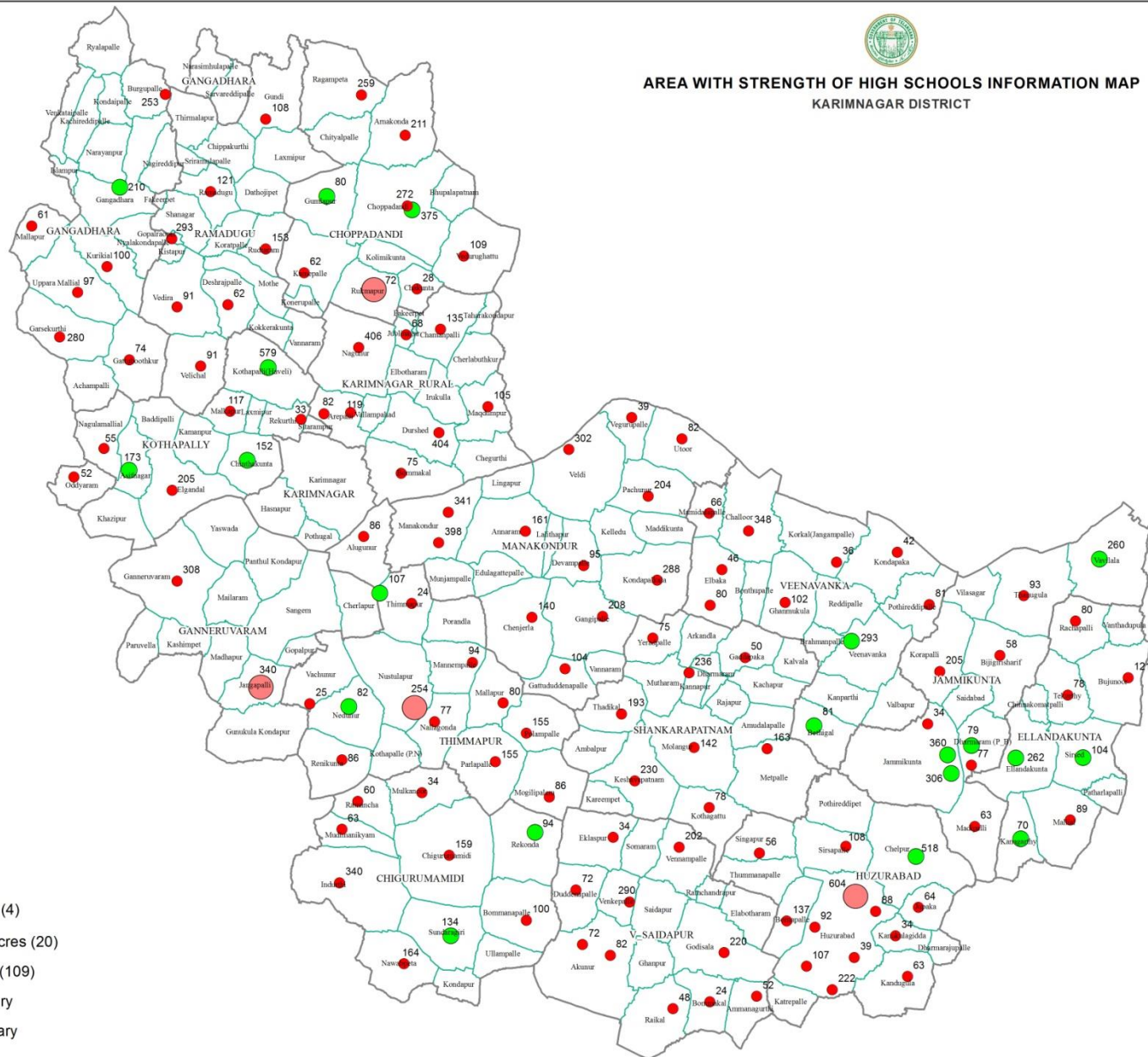
Legend

- Distance Range(0)
- Distance Range(0-3 Km)
- Distance Range(3-5 Km)
- Distance Range(5-10 Km)
- Distance Range(10Km & Above)





AREA WITH STRENGTH OF HIGH SCHOOLS INFORMATION MAP KARIMNAGAR DISTRICT

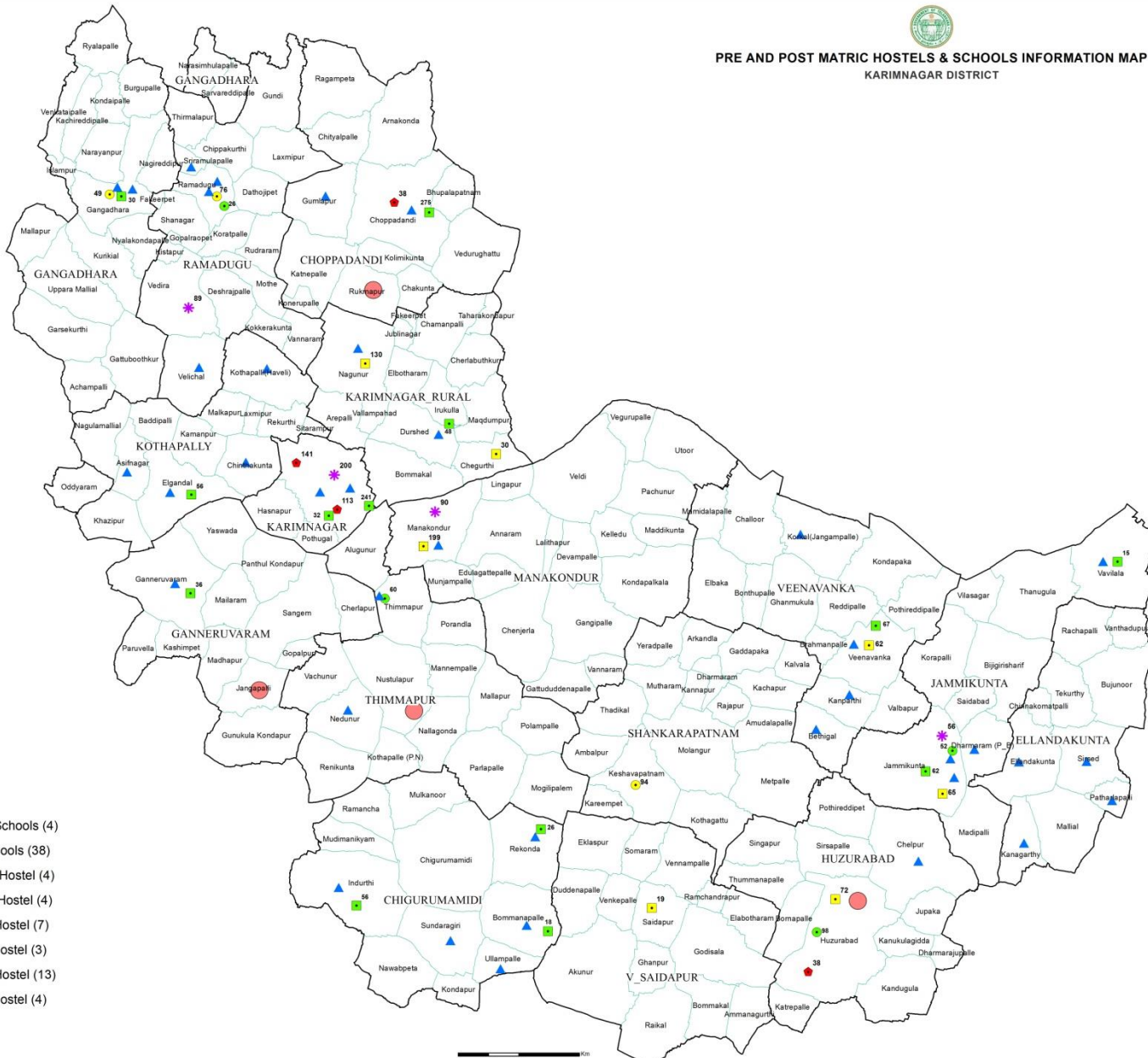


Legend

- Above 5 Acres (4)
- Between 3-5 Acres (20)
- Below 3 Acres (109)
- Village Boundary
- Mandal Boundary



PRE AND POST MATRIC HOSTELS & SCHOOLS INFORMATION MAP
KARIMNAGAR DISTRICT



Legend

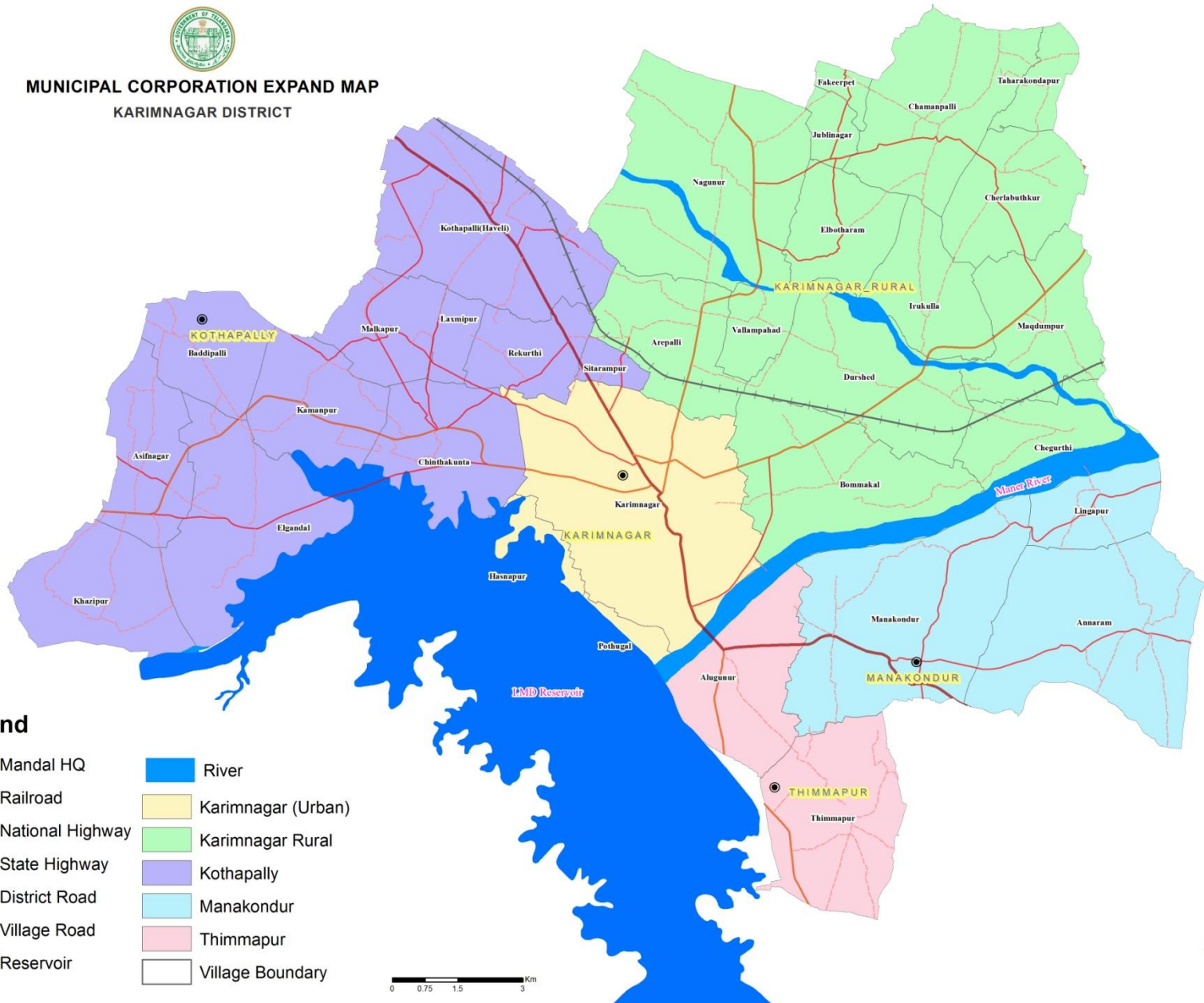
- Above 5 Acres Area Schools (4)
- ▲ 3 to 5 Acres Area Schools (38)
- ✳ Post-Matric BC Boys Hostel (4)
- ◆ Post-Matric BC Girls Hostel (4)
- Pre-Matric BC Boys Hostel (7)
- Pre-Matric BC Girls Hostel (3)
- Pre-Matric SC Boys Hostel (13)
- Pre-Matric SC Girls Hostel (4)

- Village Boundary
- Mandal Boundary



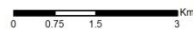


MUNICIPAL CORPORATION EXPAND MAP KARIMNAGAR DISTRICT



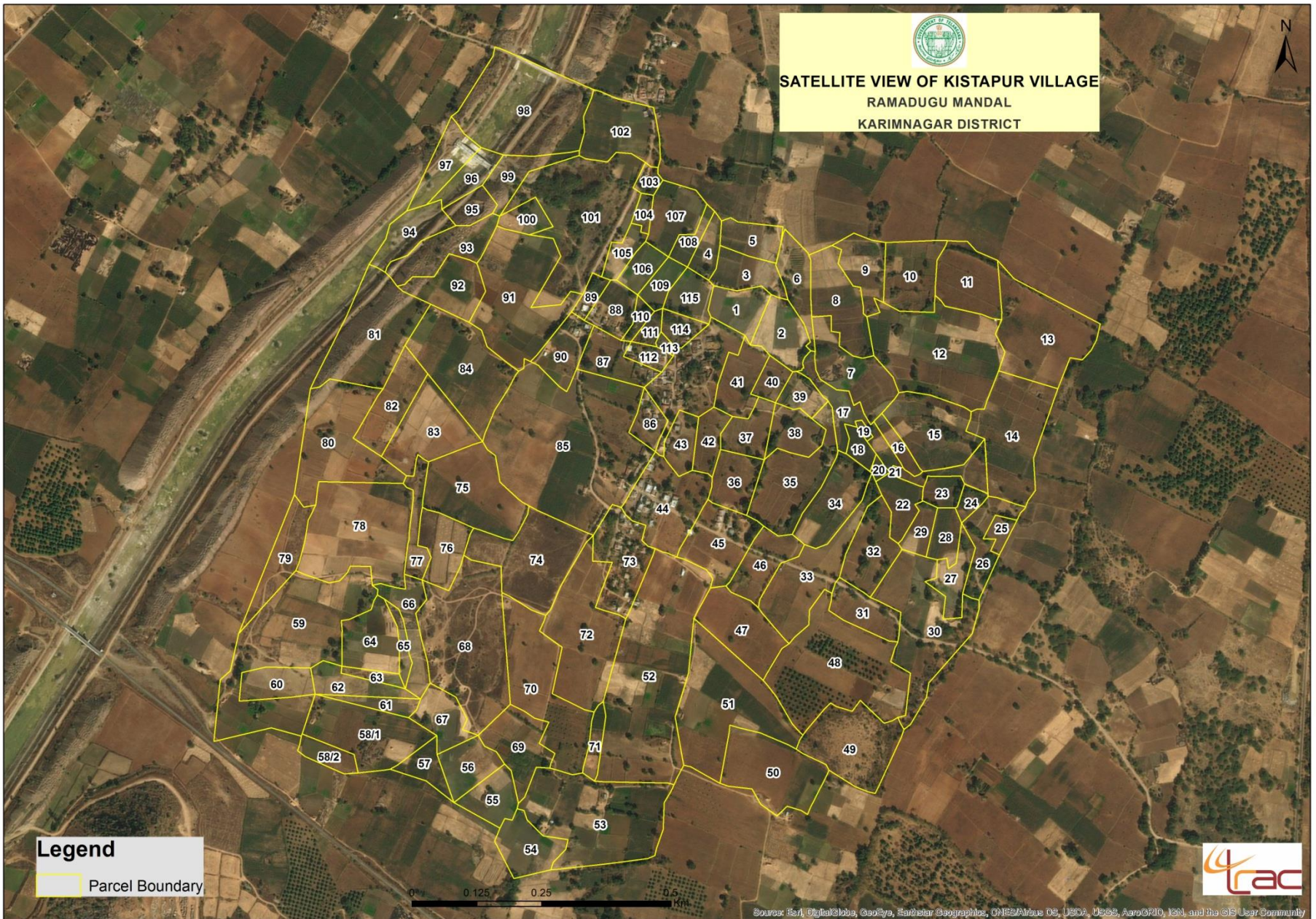
Legend

- Mandal HQ
- +—+— Railroad
- National Highway
- State Highway
- District Road
- Village Road
- Reservoir
- River
- Karimnagar (Urban)
- Karimnagar Rural
- Kothapally
- Manakondur
- Thimmapur
- Village Boundary





SATELLITE VIEW OF KISTAPUR VILLAGE
RAMADUGU MANDAL
KARIMNAGAR DISTRICT



Legend
Parcel Boundary

0 0.125 0.25 0.5 km

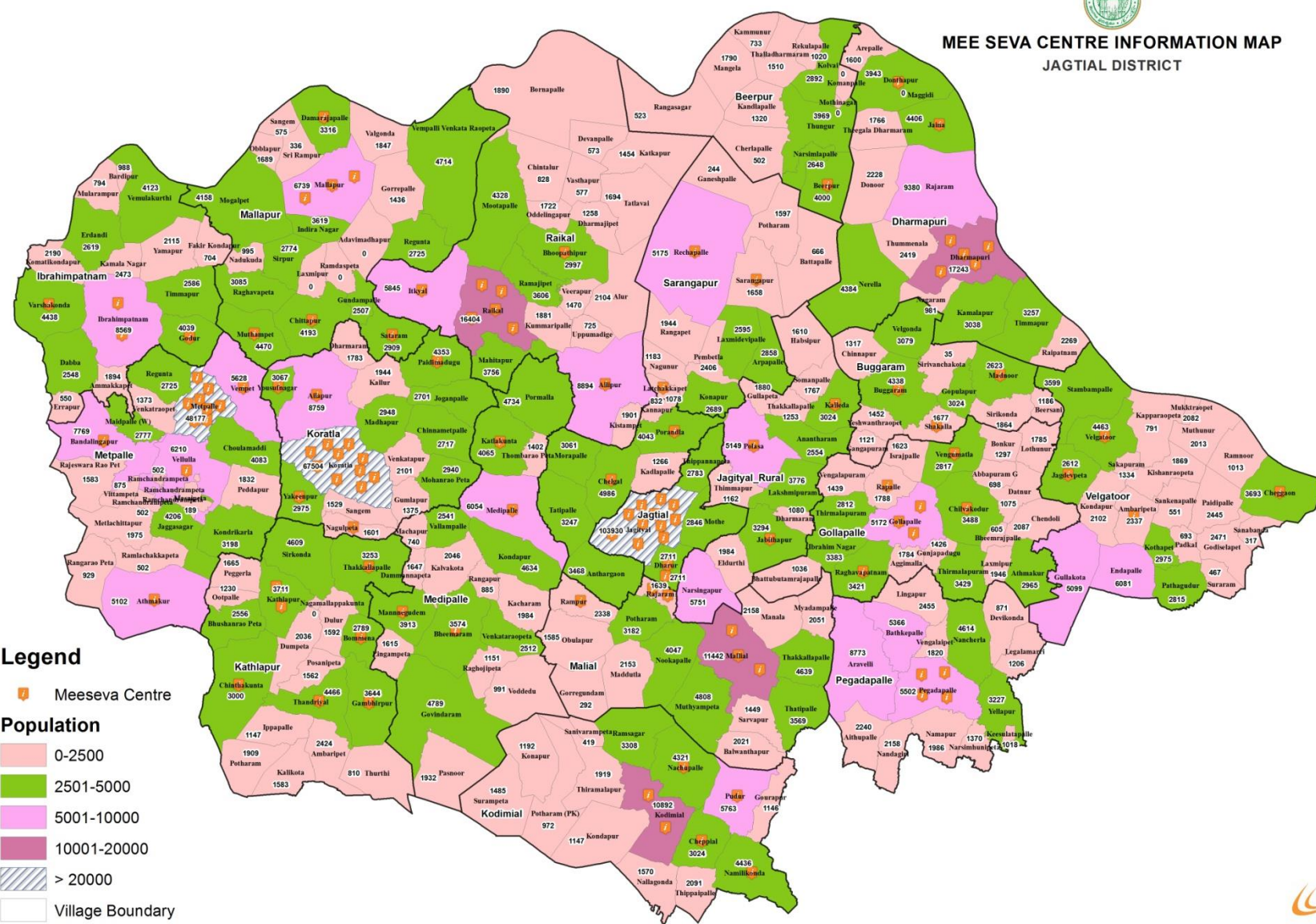


Sources: Esri, DigitalGlobe, GeoEye, Earthstar Geographics, CNES/Airbus DS, USDA, USGS, AeroGRID, IGN, and the GIS User Community



MEE SEVA CENTRE INFORMATION MAP

JAGTIAL DISTRICT

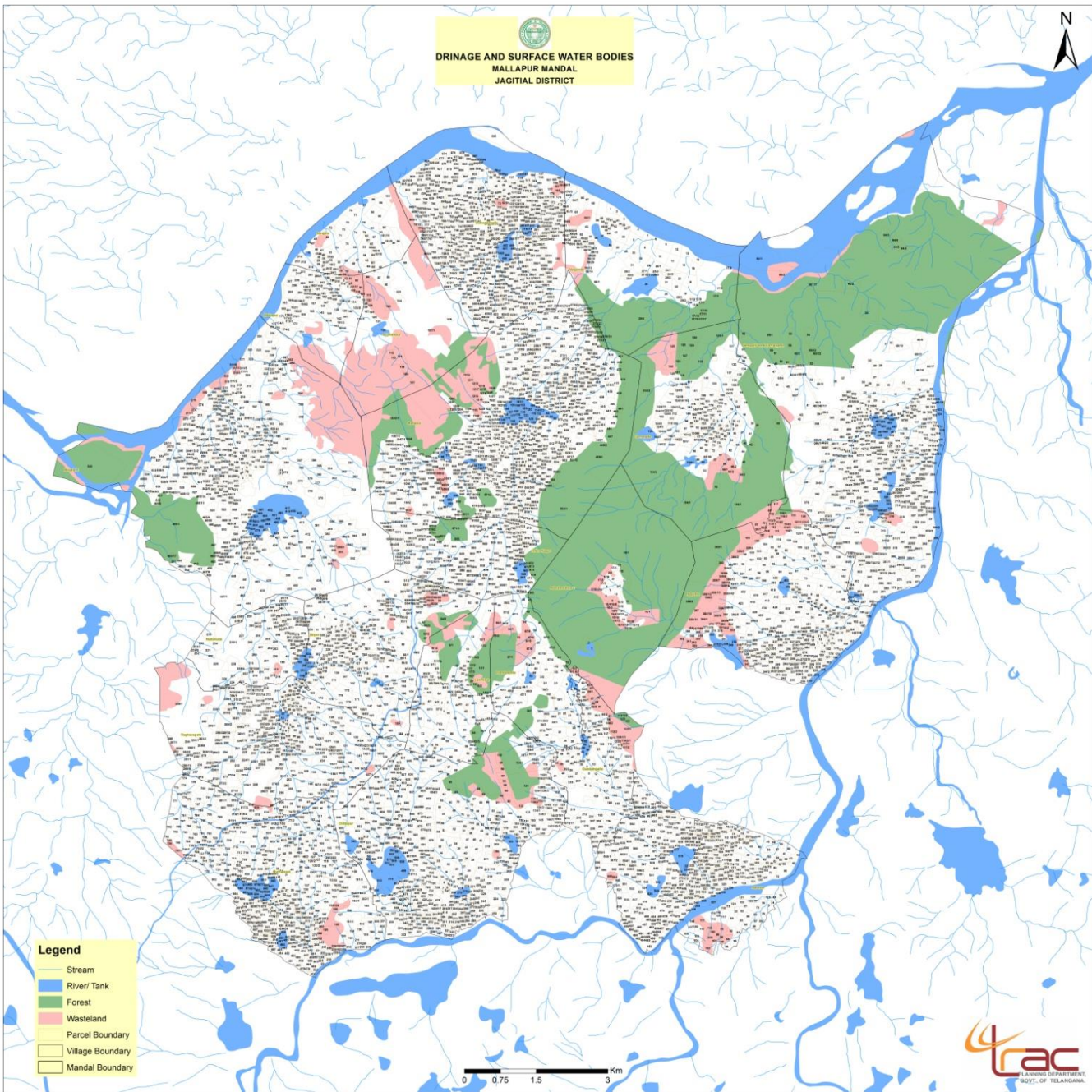


Legend

- Meeseva Centre
- Population**
- 0-2500
- 2501-5000
- 5001-10000
- 10001-20000
- > 20000
- Village Boundary
- Mandal Boundary




DRINAGE AND SURFACE WATER BODIES
MALLAPUR MANDAL
JAGTIAL DISTRICT



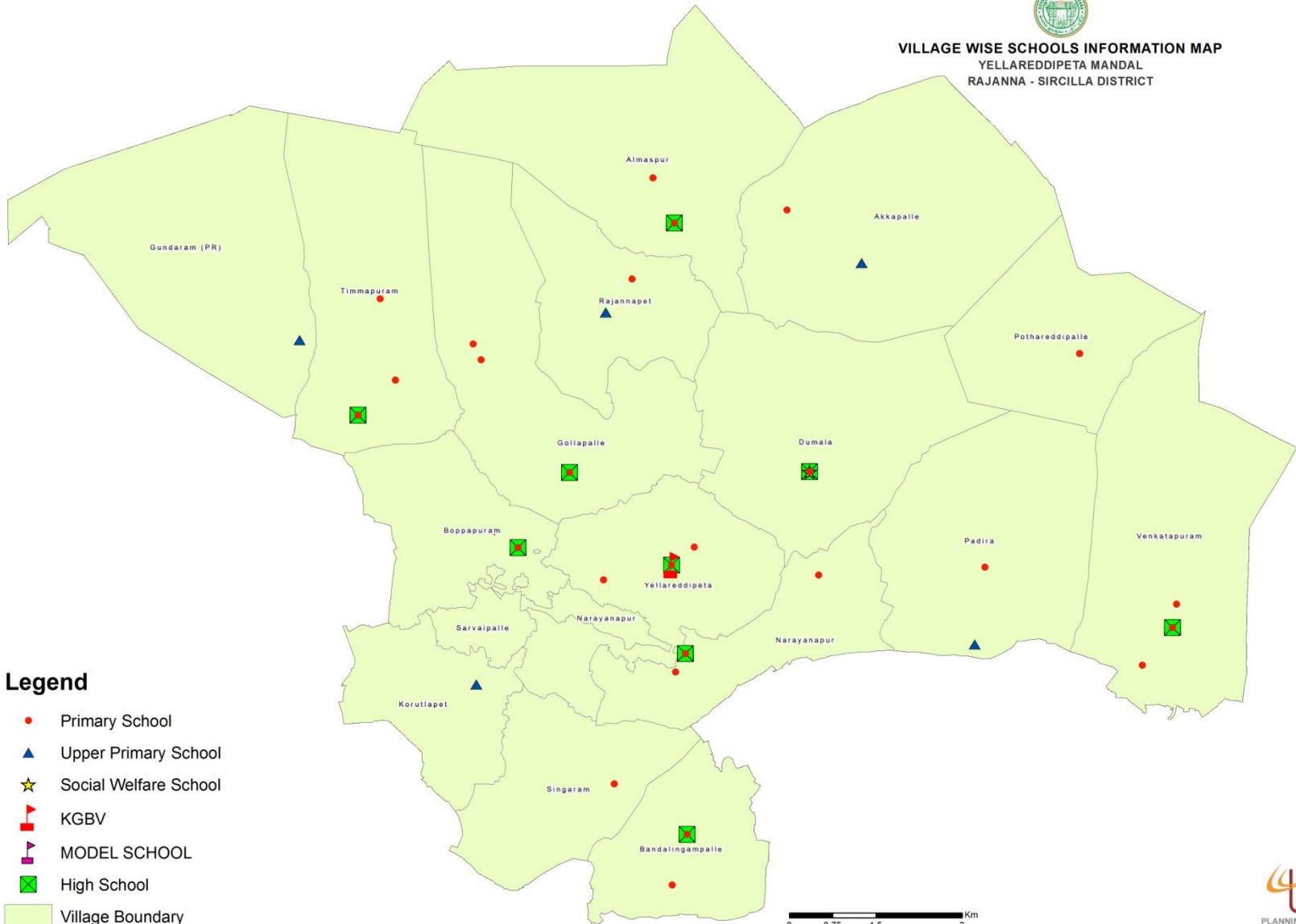
- Legend**
- Stream
 - River/ Tank
 - Forest
 - Wasteland
 - Parcel Boundary
 - Village Boundary
 - Mandal Boundary

0 0.75 1.5 3 Km





VILLAGE WISE SCHOOLS INFORMATION MAP
YELLAREDDIPETA MANDAL
RAJANNA - SIRCILLA DISTRICT

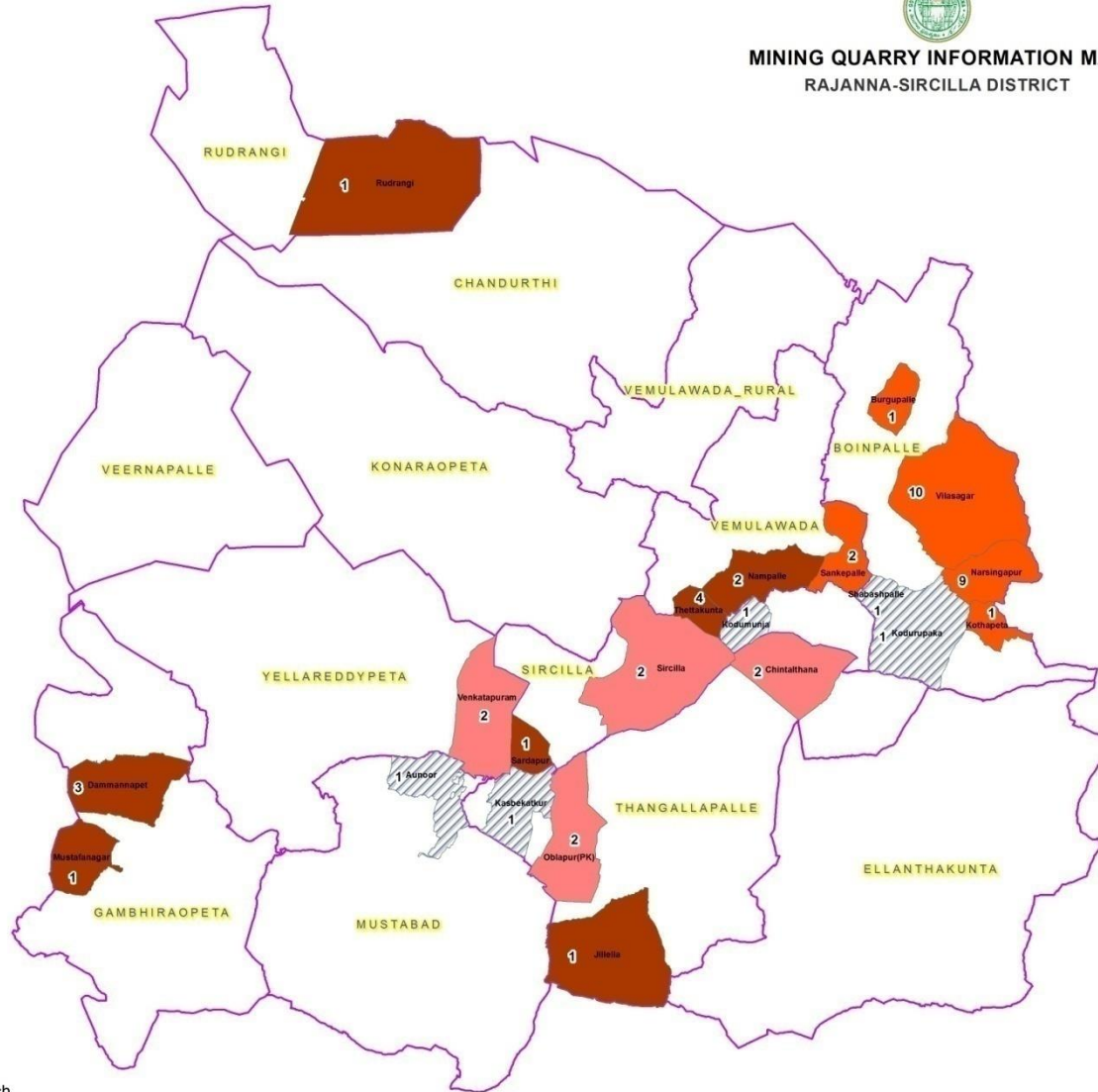


Legend

- Primary School
- ▲ Upper Primary School
- ★ Social Welfare School
- ▲ KGBV
- ▲ MODEL SCHOOL
- ⊠ High School
- Village Boundary



MINING QUARRY INFORMATION MAP RAJANNA-SIRCILLA DISTRICT



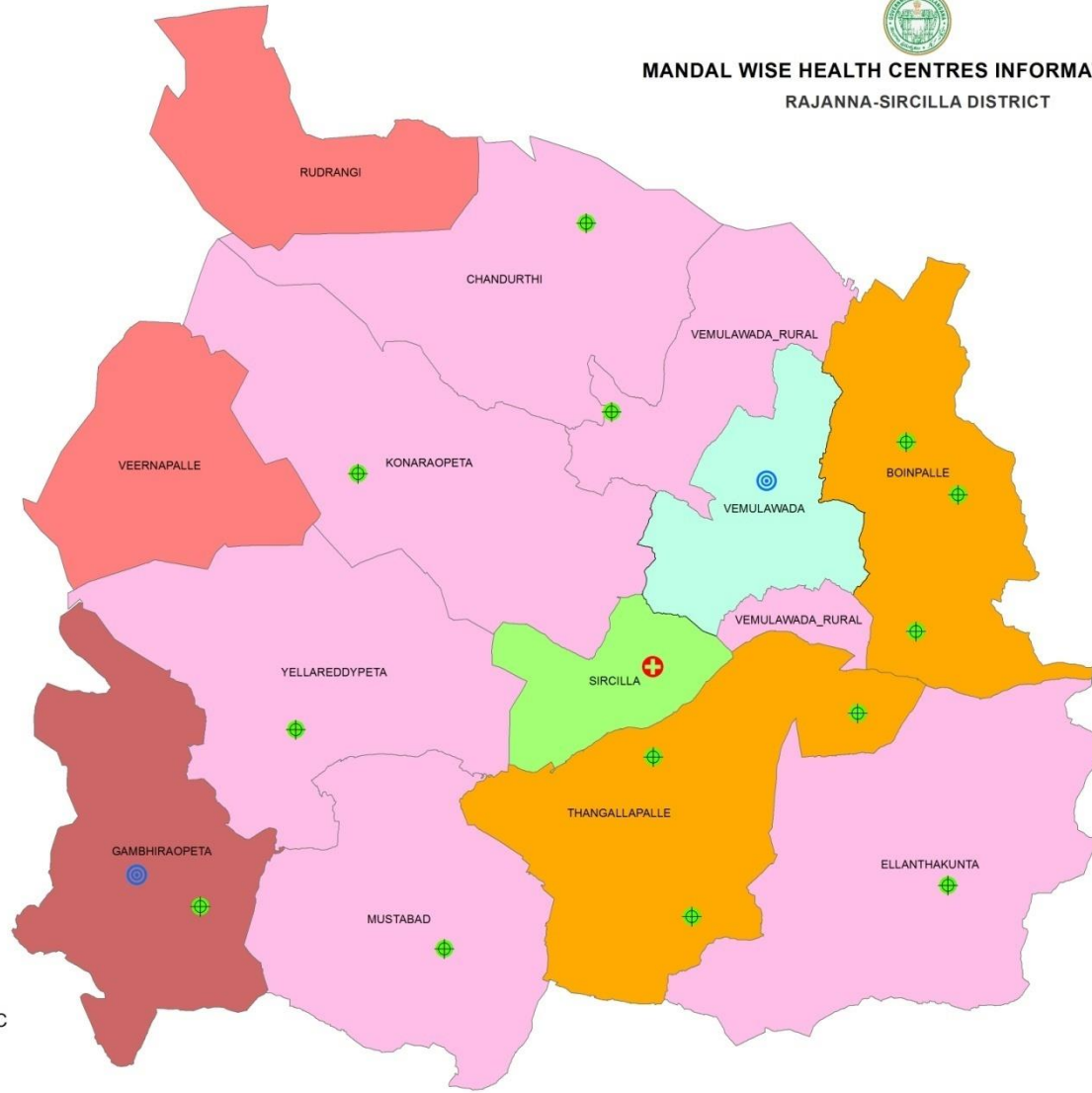
Legend

- Colour Granite
- Sand Reach
- Stone & Metal
- Stone & Metal and Sand Reach
- Mandal Boundary





MANDAL WISE HEALTH CENTRES INFORMATION MAP RAJANNA-SIRCILLA DISTRICT



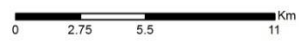
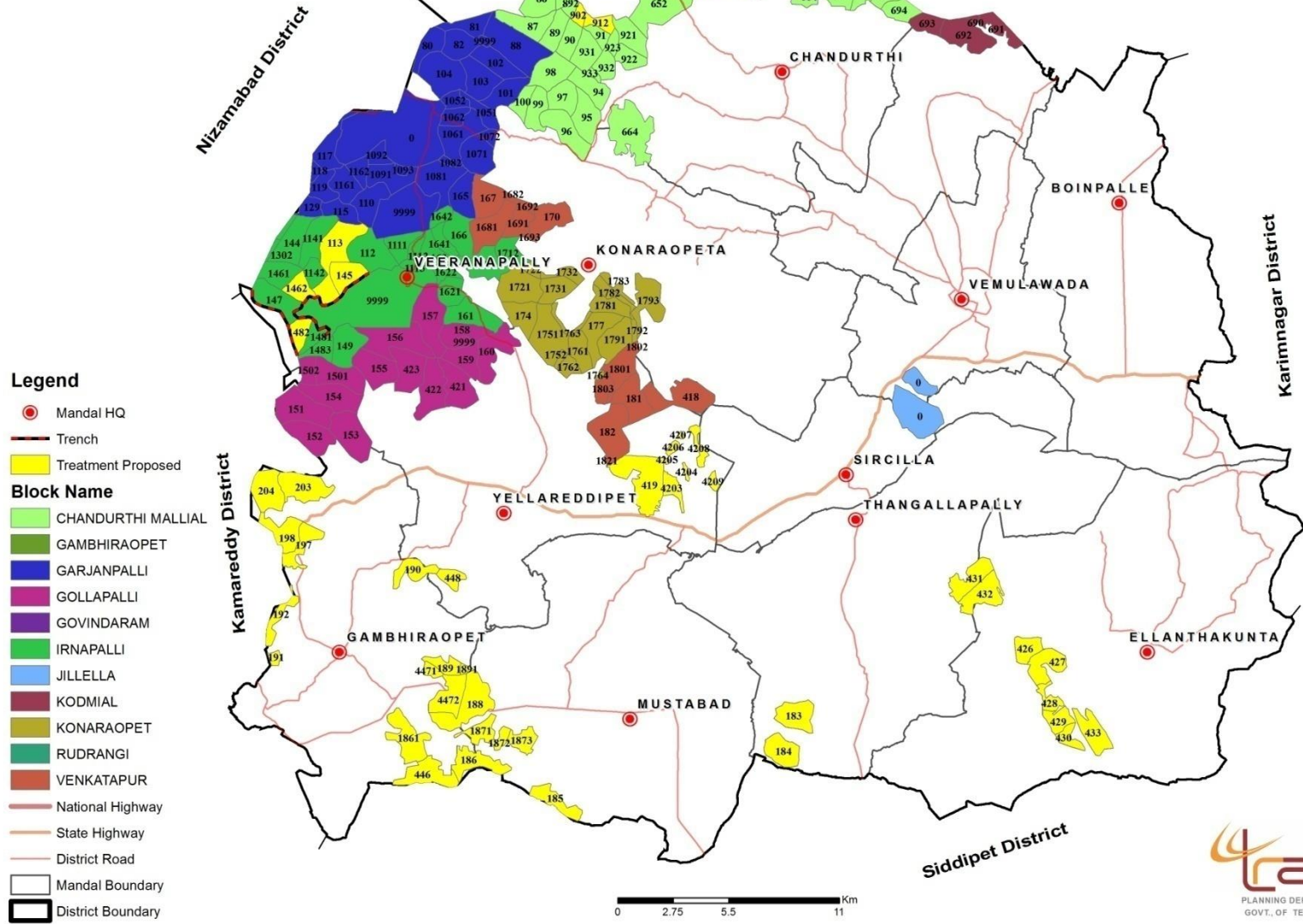
Legend

- AH
- CHC
- PHC
- Mandal Having 3PHCs
- Mandal Having 1PHC
- Mandal Having 1CHC &1PHC
- NO PHCs
- Mandal Having AH
- Mandal Having 1CHC



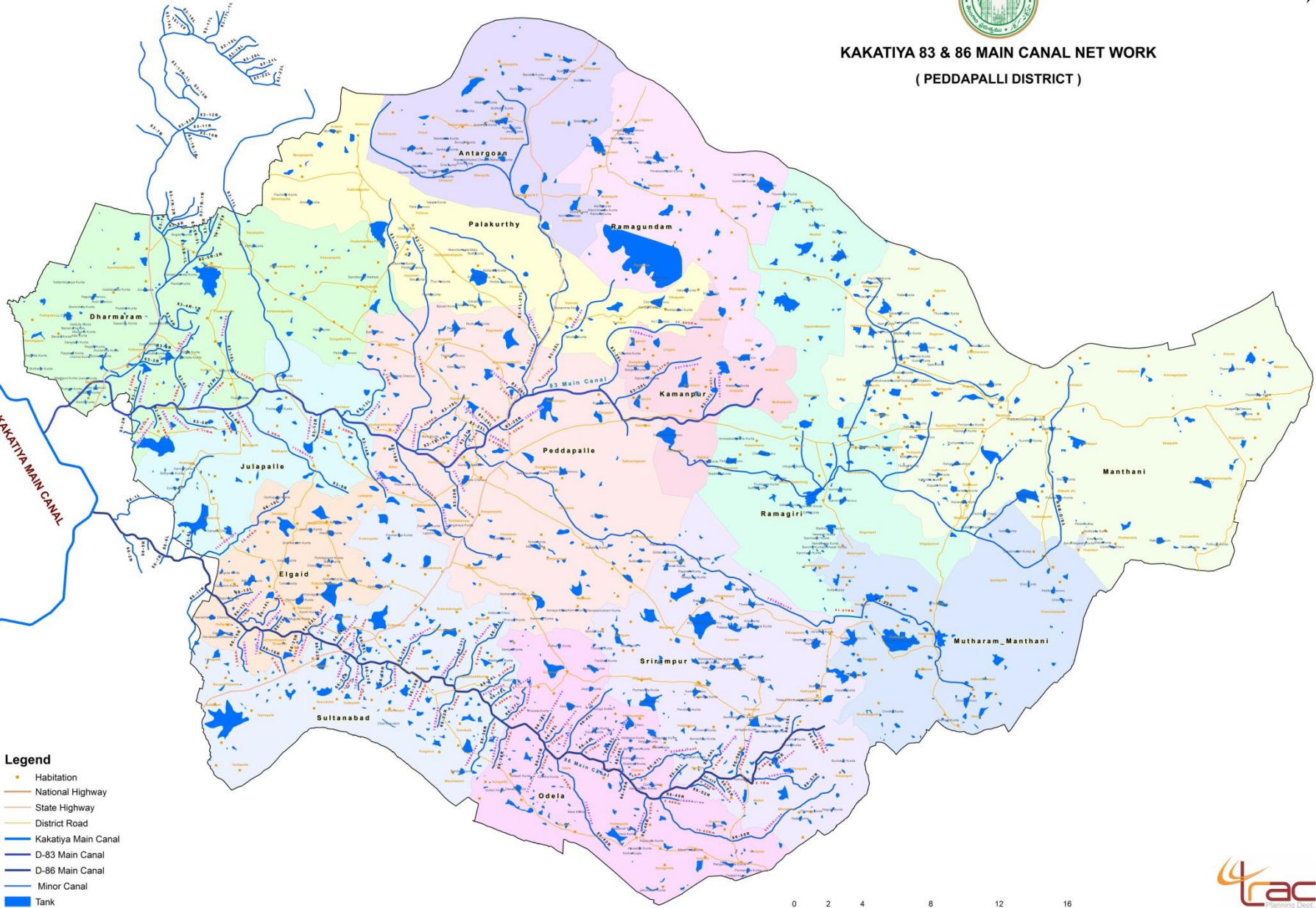


FOREST COVER MAP RAJANNA - SIRCIlla DISTRICT





KAKATIYA 83 & 86 MAIN CANAL NET WORK (PEDDAPALLI DISTRICT)

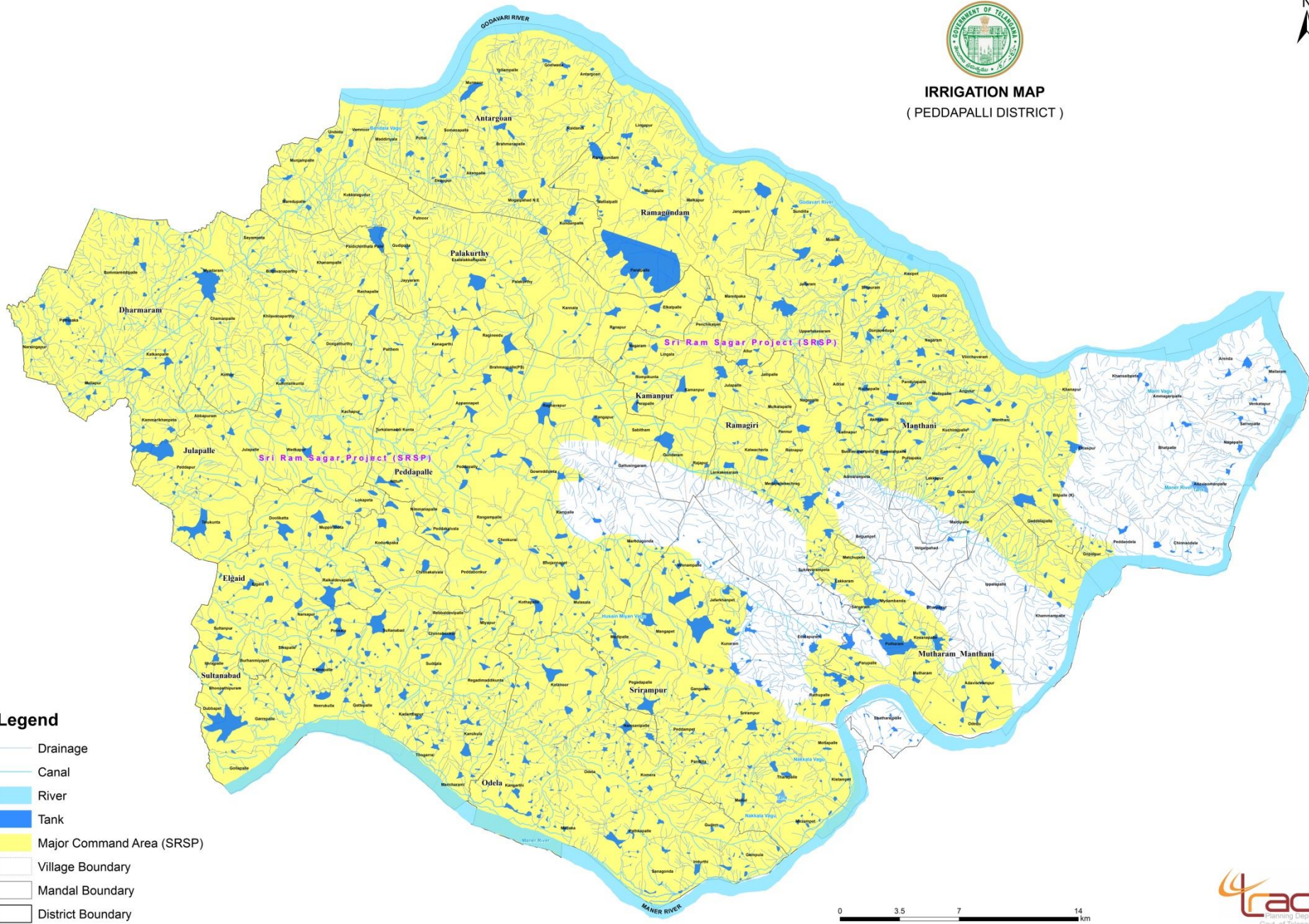


- Legend**
- Habitation
 - National Highway
 - State Highway
 - District Road
 - Kakatiya Main Canal
 - D-83 Main Canal
 - D-86 Main Canal
 - Minor Canal
 - Tank





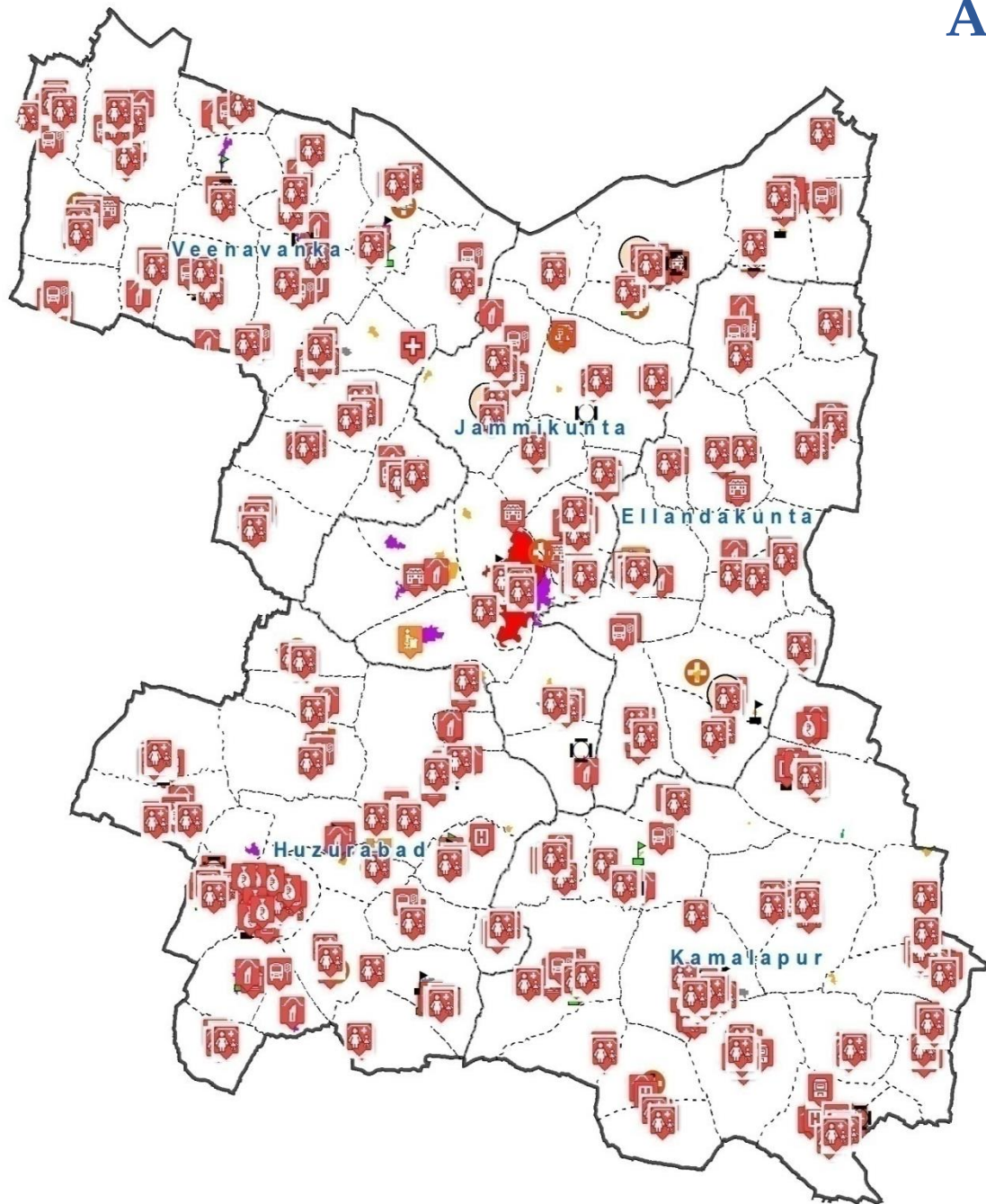
IRRIGATION MAP
(PEDDAPALLI DISTRICT)



- Legend**
- Drainage
 - Canal
 - River
 - Tank
 - Major Command Area (SRSP)
 - Village Boundary
 - Mandal Boundary
 - District Boundary












Assets Mapping



Assets

Category

-  Aanganwadi
-  Bank
-  Bus Stop
-  Credit Society
-  Degree college
-  Inter College
-  Middle School
-  Milk Collection Centre
-  Other Health Centres/Hospitals
-  Post Office
-  Primary School
-  Primary Health Centre
-  Professional College
-  Ration Shop/Fair Price Shop
-  Secondary School
-  Sub Centre
- Tehsil Taluka Office

Karimnagar Regional Centre EoDB work status				
District	No.of Villages	Completed	Pending	Digitization not Completed
Karimnagar	210	209	0	1
Peddapalli	215	206	1	8
Rajanna - Sircilla	171	168	0	3
Jagtial	280	271	0	9
Siddipet (Bejjanki)	13	13	0	0
Bhupalapalli	123	119	0	4
Warangal Urban	44	44	0	0
Total	1056	1030	1	25

- We are involved in the Field Data Collection and Ground Truth Information in Erstwhile Karimnagar District for Mapping of Land Degradation Project.
- Field Data is collected using the mobile application.
- Ground truth information along with the photographs will be uploaded on to the bhuvan site.
- All the soil samples locations should be recorded using the mobile app.
- All Samples labelled and packed properly and sent to TRAC office.



Soil Sample Collected at Tummenla (V), Jagtial (D)



Water Erosion LD Class G2 at Palakurty (V), Peddapalli (D)



Soil Sample Collected at Bollaram (V), Sircilla (D)



Thank You